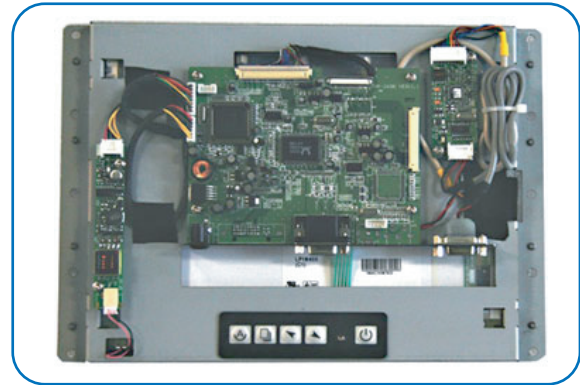
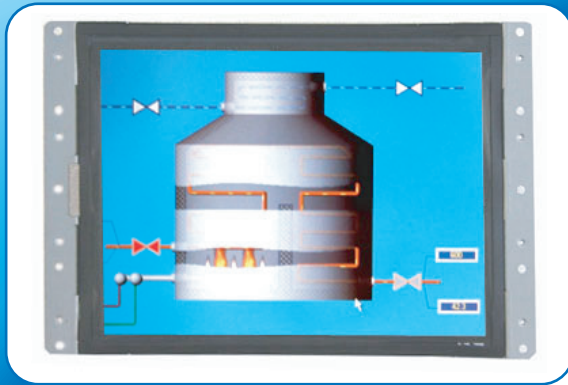


Industrial Display Monitor

Open Frame Type

10.4" SVGA Open Frame Color TFT Display Kit

OPD-1100



Display Specifications

Display	10.4" Color Active TFT Flat Panel Display
Luminance	250 cd/m ²
Viewing Angle	120 degrees (R/L)
Resolutions	800 x 600 (native mode), 262K colors
Backlight Lifetime	20,000 hrs
Touch Screen	Antiglare resistive (optional)
OSD Controls/Indicators	Automatic Screen, Setup (OSD), Brightness, Contrast, Horizontal/Vertical Position, Image Lock, Color Balance, Video Information, Power On and Sync
Power Input	DC 12V only

Mechanical Specifications

Construction	Steel chassis & front panel
Dimensions	260(W) x 191.5(H) x 31(D)mm
Weight	0.9kg (1.98 lbs)

Environment Specifications

Operating Temperature	0~50°C (32~122°F)
Storage Temperature	-20~60°C (-4~140°F)
Relative Humidity	10~90% @40 C Non-condensing, without touch screen
Vibration	1G peak, 5~500 Hz (Random)
Shock	15G peak acceleration (11 msec. duration)
Certification	CE and FCC class A

● Dimensions

