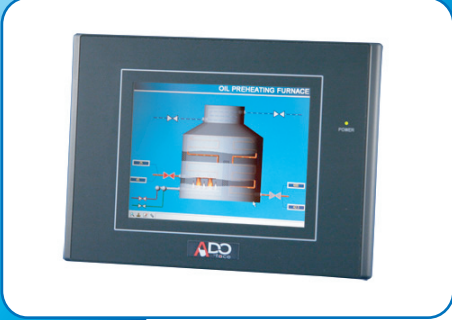




Features



- 5.7" High Brightness TFT LCD with resolution of 320x240
- Samsung S3C2410 ARM-9 203MHz processor
- 32MB system SRAM & 32MB Flash memory
- Sealed resistive touch screen
- One SD Slot (Optional, Default: None)
- Supports panel mount
- DC 24V power input

Display Specifications

LCD	5.7" QVGA 320x240
Luminance	500 cd/m ²
Viewing angle	Horizontal 60/60, Vertical 50/40
Backlight	45,000 hrs

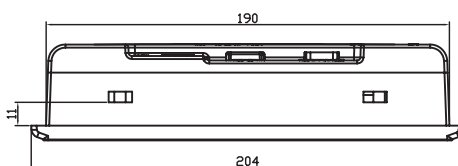
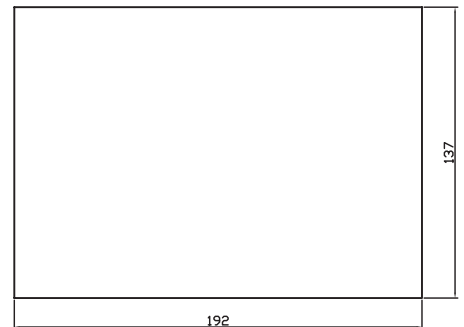
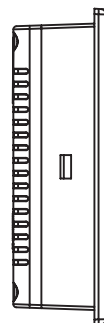
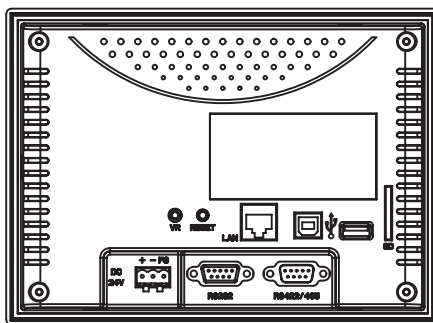
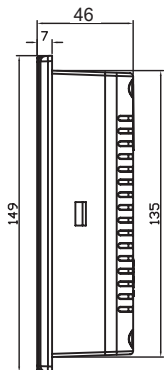
Mechanical Specifications

Construction	Plastic molding housing
Front Panel Color	Black
CPU	Samsung S3C2410 ARM-9 203MHz processor
Storage	32MB Flash memory
DRAM	32MB system DRAM
Power input	DC 24V
Touch Screen	4-wire, analog resistive
I/O ports	1 x RS-232 , 1 x RS-232-422-485 , 2 x USB (Host + Client) 1 x LAN (Ethernet: RJ-45, support 10/100Mbps Base-T)
Dimensions	204(W)x149(H)x46(D)mm
Weights	1.0kgs

Environment Specifications

Operating Temperature	0~50°C
Storage Temperature	-20~60°C
Relative Humidity	10~90% @40°C non-condensing
Vibration	5~17Hz, 0.1" double amplitude displacement, 17~640Hz, 1.5G acceleration peak to peak
Rating	NEMA 4/ IP 65 compliant front bezel
Certificate	Meet CE / FCC Class A
Mounting	Panel mount

Dimensions



Mounting Hole Size